



Instructions  
Gebrauchsanleitung  
Instrucciones  
Istruizione

**FLEXI** **TESTER**  
FTS101

**Chlorine HR**  
(0.0 - 5.0 mg/l)



**WATER TESTING**  
**MADE IN GERMANY**

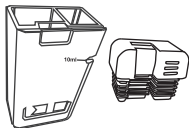
Reagents  
Reagenzien  
Réactifs  
Reactivos  
Reagenti



**FTS101**

TbsRD1  
**DPD 1 RAPID (free chlorine)**

*Optional*  
TbsRD3  
50 x DPD 3 RAPID  
not included in basic kit



**WATER TESTING**  
**MADE IN GERMANY**

**(GB) CAUTION!**

Reagents for water analysis only. Do not swallow. Keep away from children. Store in a cool and dry place. Clean tester properly before testing. Do not touch the tablets with your fingers. Protect from frost. Protect the parameter stick from moisture.

**(F) Attention!**

Les pastilles sont exclusivement destinées aux analyses chimiques. Ne pas avaler. Tenir hors de portée des enfants. Conserver dans un endroit frais et sec. Bien rincer le testeur avant chaque utilisation. Ne touchez pas les comprimés avec vos doigts. Protéger du gel. Protéger le bâton de graduation de couleur, de l'humidité.

**(E) ¡Atención!**

Pastillas para el análisis de aguas, solamente para análisis químicos. No para tomar. No debe llegar a las manos de niños. Conservarse en lugar fresco y seco. Limpiar el aparato antes de usar. No toque las tabletas con los dedos. Proteger de las heladas. Proteja el parameterstick de la humedad

**(I) Attenzione!**

Reagenti unicamente per analisi acqua. Non ingerire. Tenere fuori dalla portata dei bambini. Mantenerne in luogo asciutto e fresco. Dopo l'utilizzo pulire ed asciugare accuratamente il tester. Non toccare la pastiglia con la dita. Proteggere dal gelo. Proteggi il parametro stick dall'umidità.

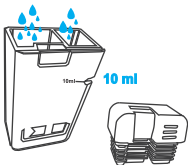
**(DE) Achtung!**

Reagenzien nur für chemische Analysen! Nicht einnehmen! Darf nicht in die Hände von Kindern gelangen! Kühl und trocken lagern! Vor Frost schützen. Den Parameterstick vor Feuchtigkeit schützen.



1

Fill with 10ml of water to be tested



2

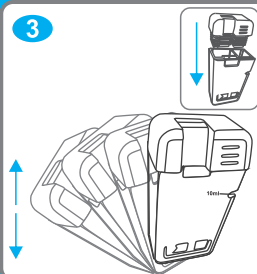


Free Chl. = 1 x DPD 1

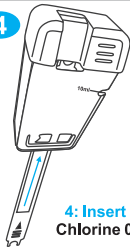
Total Chl. = 1 x DPD 1 + 1 x DPD 3  
plus 2 Min.

Combined Chl. = Total Chl. - Free Chl.

3

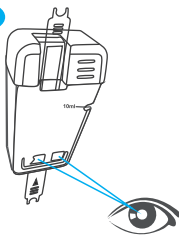


4



4: Insert FTS101 stick  
Chlorine 0.00 - 5.00 mg/l

5



**!!! Important !!!**

Very high chlorine levels  
will bleach out the DPD reagent  
and lead to colorless solution!

DPD RAPID tablets  
leave a white residue  
on the bottom of the tester.  
This is normal and does not  
interfere with the measurement

