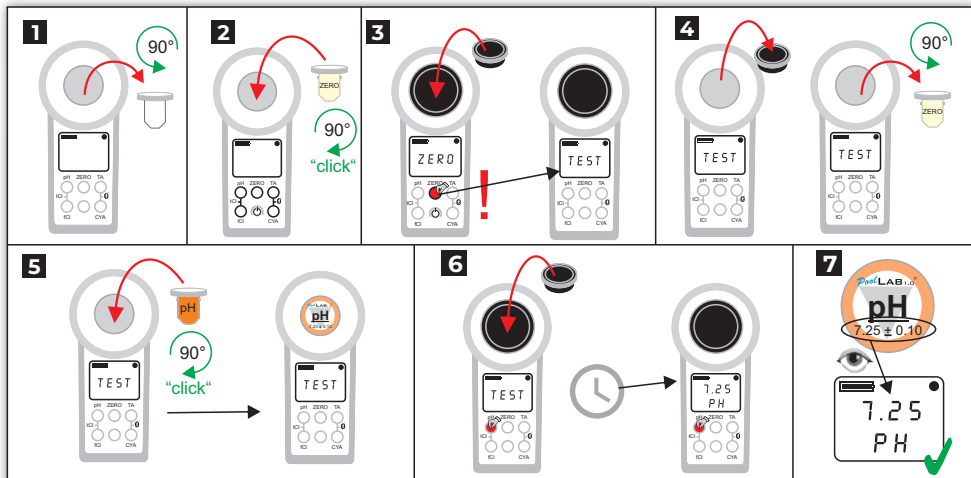


# REFERENCE KIT



- 1.** Remove the cuvette by unscrewing it counterclockwise.
- 2.** Insert the ZERO cuvette, screw it clockwise until the end ("click").
- 3.** Put the light shield on top and press the ZERO button.
- 4.** Remove the light shield and the ZERO cuvette.
- 5.** Insert one of the reference cuvettes for the desired test. Put the light shield on top.
- 6.** Press the button or button-combination for your desired test to start the measurement.
- 7.** Compare the test result with the sticker on the cuvette (!+/- tolerances)

## Notes:

Make sure the reference cuvettes are free of any impurities | Align the cuvettes with the arrowhead towards the devices display | Make sure you feel the „click“ when inserting the cuvette | Place reference cuvettes in a cool and dark place | Always use light-shield during ZERO and TEST