

Electronic Meter

User Manual

Manuel d'utilisation

(pH) FT11

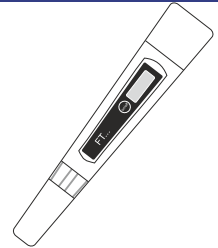
Manual de usuario

(TDS) FT34 FT36

Gebrauchsanleitung

(EC) FT33 FT35

Manuale dell'utente

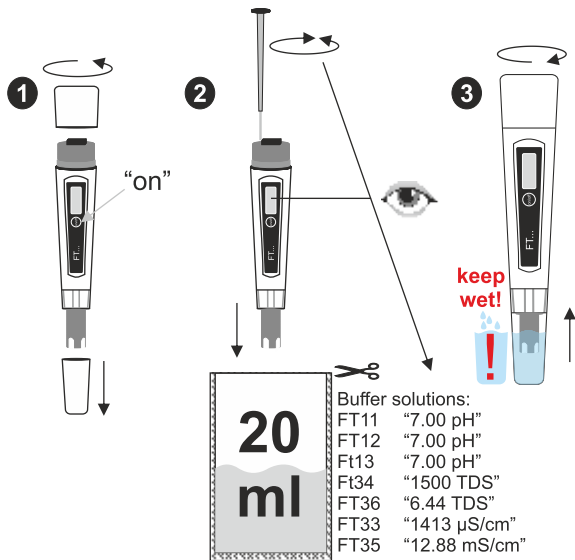


Inverkehrbringer / Distributed by: Water-i.d. GmbH • Daimlerstr. 20 • D-76344 Eggenstein • www.water-id.com

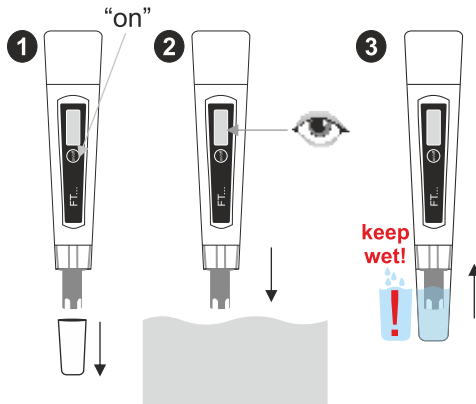
	FT11	FT34	FT36	FT33	FT35
Range	0.0-14.0 pH	0-1999 ppm 0.0-1.999 ppt)	(0-10000 ppm) 0.00-10.00 ppt)	0-1999 μ S/cm (0-1.999 mS/cm)	(0-19990 μ S/cm) 0.00 - 19.99 mS/cm)
Resolution	0.1 pH	1 ppm	0.01 ppt	1 μ S/cm	0.01 mS/cm
Accuracy	+/- 0.1 pH	+/- 2% FS	+/- 2% FS	+/- 2% FS	+/- 2% FS
Calibration	manual	manual	manual	manual	manual
Temp. Comp.	---	automatic 0 - 50° C β = 2%/°C	automatic 0 - 50° C β = 2%/°C	automatic 0 - 50° C β = 2%/°C	automatic 0 - 50° C β = 2%/°C
Battery Type	3 x 1.5 V	4 x 1.5 V	4 x 1.5 V	4 x 1.5 V	4 x 1.5 V
Batt. Life	~ 1000 h	~250 h	~250 h	~250 h	~250 h
Environment	0 - 50° C RH 100%	0 - 50° C RH 100%	0 - 50° C RH 100%	0 - 50° C RH 100%	0 - 50° C RH 100%

Electronic Meter

Calibration



Use



Battery

